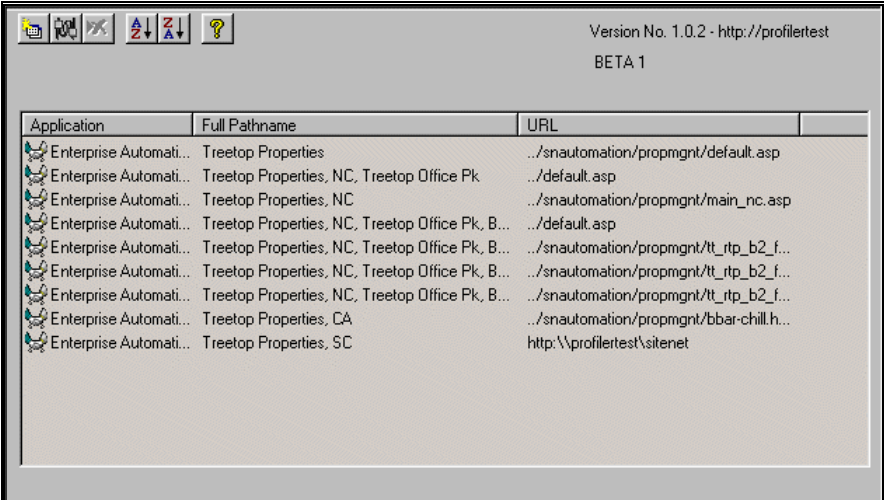


SiteNet Application Links

Welcome to SiteNet™ Application Links

Application Links allows you to link a selected path with a web page for a specific application.




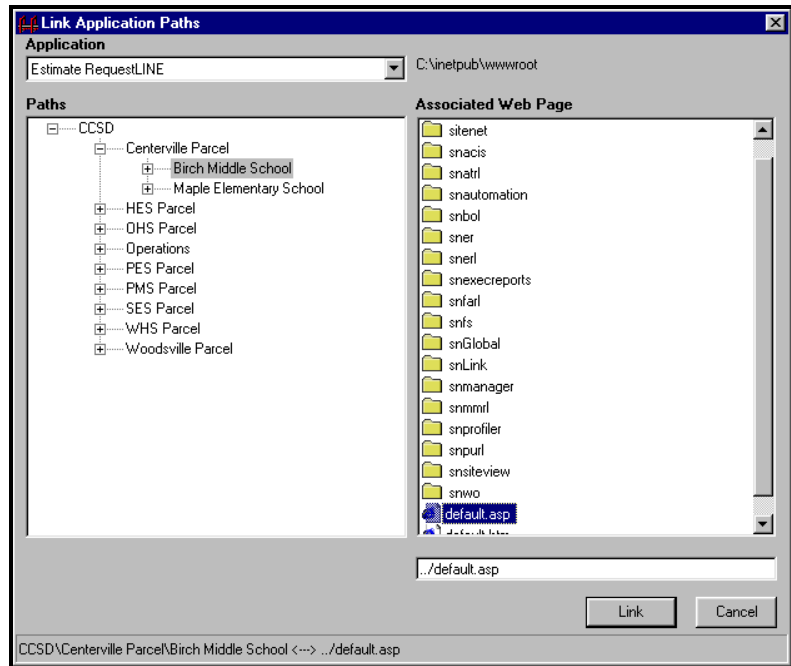
The screenshot shows a window titled "Version No. 1.0.2 - http://profilertest BETA 1". The window contains a table with three columns: "Application", "Full Pathname", and "URL". The table lists several application links for "Enterprise Automati..." with various full pathnames and URLs.


Application	Full Pathname	URL
Enterprise Automati...	Treetop Properties	../sautomation/propmgnt/default.asp
Enterprise Automati...	Treetop Properties, NC, Treetop Office Pk	../default.asp
Enterprise Automati...	Treetop Properties, NC	../sautomation/propmgnt/main_nc.asp
Enterprise Automati...	Treetop Properties, NC, Treetop Office Pk, B...	../default.asp
Enterprise Automati...	Treetop Properties, NC, Treetop Office Pk, B...	../sautomation/propmgnt/tt_rtp_b2_f...
Enterprise Automati...	Treetop Properties, NC, Treetop Office Pk, B...	../sautomation/propmgnt/tt_rtp_b2_f...
Enterprise Automati...	Treetop Properties, NC, Treetop Office Pk, B...	../sautomation/propmgnt/tt_rtp_b2_f...
Enterprise Automati...	Treetop Properties, CA	../sautomation/propmgnt/bbar-chill.h...
Enterprise Automati...	Treetop Properties, SC	http://profilertest/sitesnet

Creating Application Links

To create an Application Link:

1. Click  on the toolbar from the Application Links Form. The Link Application Paths Form appears.



2. In the **Application** box, select the application to which you wish to link.
3. In the **Paths** box, drill-down to select the path you wish to link.
4. In the **Associated Web Page** box, highlight the web page you wish to link. If you wish to select a web page that is not in the Associated Web Page box, enter that page in the field under the Associated Web Page box. You will see your linked path and web page at the bottom of the screen.
5. Click . **Note: The Link button remains disabled until you have chosen both a path and an associated web page.**