

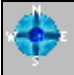





SiteView






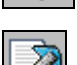

Welcome to SiteView

SiteView is a web-based application that allows you a single point of access to facilities information. SiteView runs under the SiteNet platform and can be integrated with SiteNet™ and RequestLINE web-based applications such as:

- SiteNet™ Work Order
- SiteNet™ Facility Scheduling
- SiteNet™ Estimate
- SiteNet™ Maintenance Management RequestLINE
- Purchase RequestLINE
- Asset Tracker RequestLINE

The SiteView Toolbar

-  Navigate map
-  Select facility from a drop-down box
-  Return to previous view
-  Deselect all objects
-  Return to original map
-  Zoom out

-  Restore map to original view
-  Zoom in
-  Pan map
-  Zoom into a selected object
-  Copy map to clipboard
-  Page setup
-  Print map

Right-clicking in SiteView

Most of the functionality available in SiteView can be accessed by right clicking. The following options are available when you click with the right mouse button:

Tape Measure

Tape Measure calculates the distance between two points on a map. To use this function:

1. Right-click and select **Tape Measure**.



2. Click an **origination point**.
3. Drag the mouse to a **termination point**. When the mouse stops moving, the distance between the two points appears

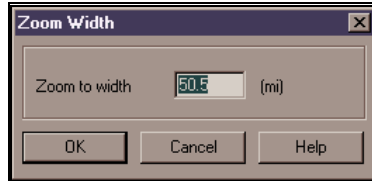
Distance: 12.7 (mi)
Total: 12.7 (mi)

in a pop-up window. From there, you can continue to measure distances, or click **Esc** to stop the feature.

Zoom Width

Zoom Width allows you to set the width at which the map displays when the zoom tool is clicked. To set zoom width:

1. Right-click and select **Zoom Width**.

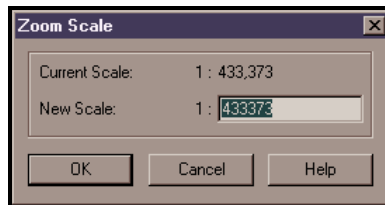


2. Enter the **Zoom to width** (in miles).
3. Click **OK**.

Zoom Scale

Zoom Scale allows you to set the scale at which the map displays. To set zoom scale:

1. Right-click and select **Zoom Scale**.

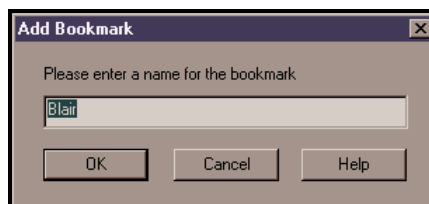


2. Enter the **New Scale** figure.
3. Click **OK**.

Add Bookmarks

Add Bookmarks allows you to bookmark a particular location so that you can access it without searching for it again. To add a bookmark:

1. Right-click on the location and select **Bookmarks → Add Bookmark**.



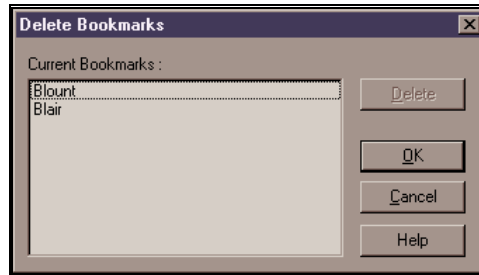
2. Enter a **name** for the bookmark.
3. Click **OK**.

Your bookmark appears in when you right-click and select Bookmarks.

Delete Bookmarks

Delete Bookmarks allows you to delete a previously created bookmark. To delete a bookmark:

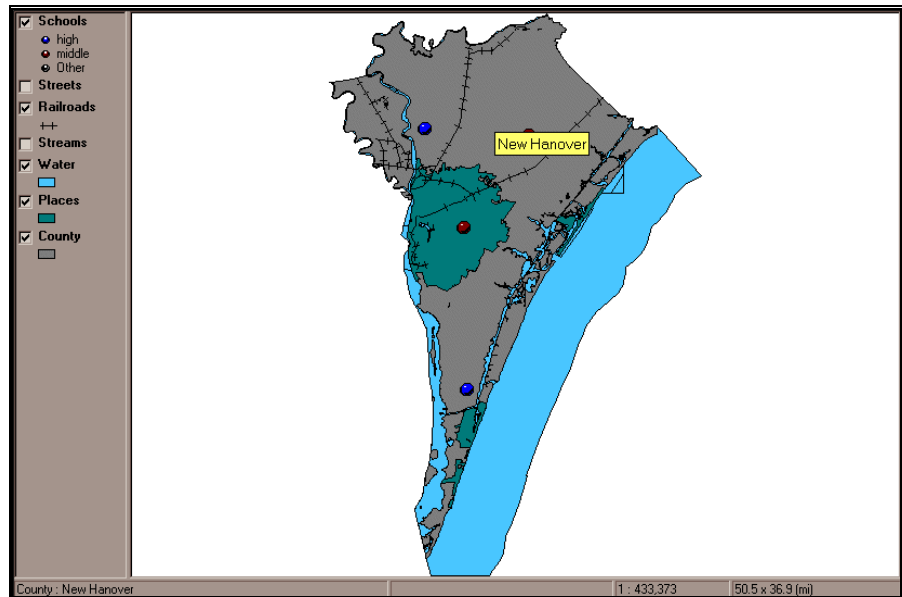
1. Right-click on the location and select **Bookmarks** → **Delete Bookmark**.



2. Select the bookmark you wish to delete.
3. Click **Delete**.
4. Click **OK** to return to the map view.

An Introduction to Map Layers

SiteView maps are comprised of several distinct layers of detail. What these layers are depends on how each map is set up. Your selection options appear in a legend on the left pane of the SiteView screen. The map that corresponds appears on the right pane of the SiteView screen. You can select or deselect an option by clicking the check box next to the option. For an example, refer to A Mapped Example.



A Mapped Example

In the SiteView example below, we have mapped a school system. In the selection pane, our options are:



Schools-- shows high schools (represented by blue orbs), middle schools (represented by red orbs), and other schools that are set up (represented by gray orbs).

Streets-- shows streets in relation to the schools.

Railroads -- shows railroads (represented by ++) in relation to the schools.

Water -- shows water (represented in blue) in relation to the schools.

Places -- shows places (represented in teal) in relation to the schools.

County -- shows the county (represented in gray) in relation to the schools.

We have selected to see the Schools layer, the Railroads layer, the Water layer, the Places layer, and the County layer (as shown in the following map).

